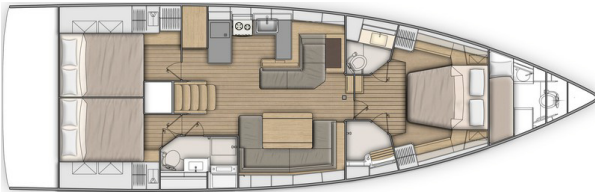
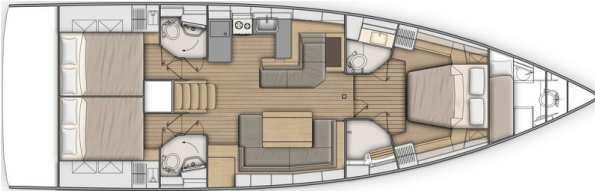




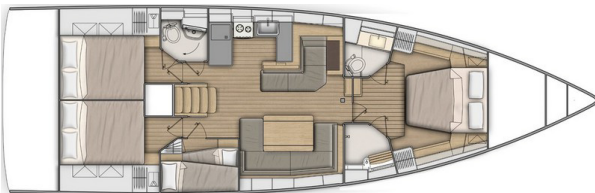
3 cabins 2 heads version:



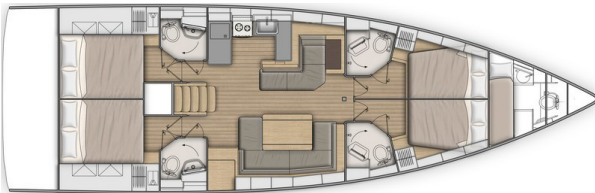
3 cabins 3 heads version:



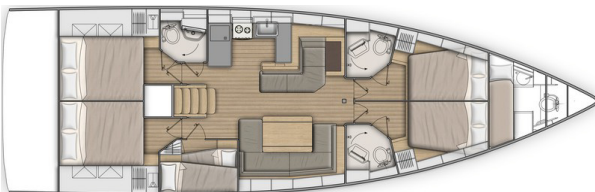
4 cabins 2 heads version:



4 cabins 4 heads version:



5 cabins 3 heads version:



GENERAL SPECIFICATIONS

• L.O.A (with bowsprit)	15,94m	52'4"
• L.O.A (standard)	15,43m	50'7"
• Hull length	14,98m	49'2"
• L.W.L.	14,52m	47'8"
• Beam	4,80m	15'9"
• Deep draft (Cast iron)	2,36m	7'9"
• Deep ballast weight	3 396kg	7,485 lbs
• Shallow draft (Cast iron)	1,92m	6'4"
• Shallow ballast weight	3 604kg	7,943 lbs
• Performance draft (Cast iron/Lead)	2,88m	9'5"
• Performance ballast weight	3 198kg	7,048lbs
• Air draft:		
• Mast 2 spreaders	21,40m	70'3"
• Mast Performance	22,91m	75'2"
• Light displacement	13 930kg	30,702 lbs
• Fuel capacity (standard)	200L	53 US Gal
• Fuel capacity (Option)	200L	53 US Gal
• Fresh water capacity (standard)	440L	116 US Gal
• Fresh water capacity (Option)	330L	87 US Gal
• Engine power (standard)	80 HP	80 HP
• Engine power (Option)	110 HP	110 HP

ARCHITECTS / DESIGNERS

- Naval Architect: Berret Racoupeau Yacht Design
- Outside & interior design: Nauta Design

EC CERTIFICATION

- Category A - 13 people
- Category B - 14 people
- Category C - 16 people

STANDARD SAILS DIMENSIONS

• Furling mainsail (standard)	45m ²	484 sq/ft
• Self-tacking jib (standard)	46,1m ²	496 sq/ft
• Classic mainsail	57m ²	613 sq/ft
• Genoa - 105 %	65m ²	700 sq/ft
• Code 0	138m ²	1,485 sq/ft
• Asymmetric spinnaker	180m ²	1,937 sq/ft
• I	18,32m	60'1"
• J	6,3m	20'8"
• P - Roller furling mast	17,47m	57'4"
• P - Mast 2 spreaders	17,58m	57'8"
• E	5,50m	18'1"

PERFORMANCE (3 spreaders mast)

• Classic mainsail	63,5m ²	683 sq/ft
• Genoa	72m ²	775 sq/ft
• I	19,82m	65'
• J	6,3m	20'8"
• P	19,20m	63'
• E	5,50m	18'1"

sean@apps

CONNECT YOUR BOAT FREE YOUR MIND



STANDARD EQUIPMENT

CONSTRUCTION

- Design in accordance with European Directive requirements and according to CE certification
- Vacuum infused hull (GRP / Sandwich balsa wood)
- Vacuum infused structural inner liner (Fabrics - resin) bonded to the hull
- Injected deck construction in glass fiber and Saerform foam sandwich, covered with non-slip diamond pattern
- Cast iron keel fixed with bolts and stainless steel backing plates
- Twin rudders hung with stainless steel stock
- White coloured hull - Grey metal hull graphics
- 8 Hull portholes

DECK EQUIPMENT

RIGGING

- Anodised aluminum mast, deck stepped with in-mast furling system, 2 Aft swept spreaders
- Anodised aluminum boom
- Discontinuous stainless steel standing rigging
- Split backstay
- Rigid boom vang with tackle
- Self-tacking jib with on-deck furler
- 2 Stand Up mainsheet blocks on the coachroof
- 1 Self-tacking jib track with traveller
- All lines brought back to the helm stations (except boom topping lift and genoa halyard)
- Complete running rigging: Mainsail halyard, Genoa halyard with on-mast tensioner, Boom topping lift with cleat on mast, Mainsheet, 1 Self-tacking jib sheet
- 6 Clutches
- Halyard covers
- 2 Flag halyards

WINCHES

- 1 Self tailing winch (H46.2 STA) at each helm station
- 1 Aluminum Speed Grip winch handle
- 2 Winch handle holders

SAILS

- Dacron furling mainsail with Natural UV protection
- Dacron self-tacking jib with Natural UV protection

MOORING LINES - MOORING

- Self-draining chain locker - Clench bolt - Hatch cover
- Single roller stainless steel bow fitting with offset roller
- 12 V - 1 500 W vertical electrical windlass - Remote control
- 6 Aluminum mooring cleats, Length: 400mm / 15³/₄ - Stainless steel chafing plate

SAIL LOCKER

- Access through deck hatch T70, Passage width: 62 cm / 2'
- Stainless steel ladder
- Shelving unit
- Lighting
- 1 230 V socket

SAFETY ON DECK

- 1 Open stainless steel pulpit
- 2 Stainless steel pushpits
- 2 Stainless steel handrails on coachroof
- 1 Lifebuoy support bracket
- Welded ring on pushpit for flag
- Double guard lines and stainless steel stanchions, 650mm / 2'2"
- Emergency ladder on pushpit

COCKPIT

- Self-draining cockpit
- 2 Watertight lockers under the cockpit benches
- 1 Locker in cockpit bottom
- 1 Gas compartment under port helmsman seat
- Iro-Deck slatted cockpit benches
- Iro-Deck slatted helm seats, with starboard storage locker
- Foldaway helmsman foot chock
- 2 Steering wheel consoles: Stainless steel steering wheels (900mm diameter / 2'11") - Anthracite leather covering - Steering gear at the helm station - Steering line transmission system - Stainless steel handrail
- 2 Deck access for emergency tiller
- 1 Emergency tiller
- 1 Steering compass on the cockpit table
- Engine throttle and control panel on starboard
- Cockpit table, stainless steel frame, 2 natural solid wood extension leaves, 4 cup holders, stainless steel handrail, waterproof USB socket, life raft stowage
- 1 Cockpit shower with mixer tap
- 2 Hinged PMMA companionway doors - Sliding hatch made of PMMA

SWIM PLATFORM / AFT TRANSOM

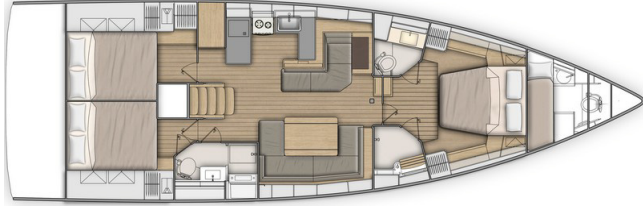
- Fully opening transom, convertible to bathing platform (2,65m x 0,80m / 8'8" x 2'7")
- Intermediate cockpit access step
- Electrically operated
- Iro-Deck slatted swim deck
- 1 Stainless steel, removable bathing ladder with dedicated stowage in the cockpit



INTERIOR

- Alpi walnut woodwork
- Rovere Aleve type laminated floorboards
- Fabric upholstery
- Padded lining in saloon (Beige)
- Mattresses in the cabins, HR35kg/m3 foam

Standard version: 3 cabins 2 heads version



COMPANIONWAY

- Headroom: 2,03m / 6'8"
- Wooden saloon companionway with moulded wood suspended steps with non-slip surface
 - 2 Stainless steel handrails covered with anthracite leather

SALOON - STARBOARD

- Headroom: 2,03m / 6'8"
- U shaped saloon bench - double density foam
 - 1 Flexible and swivelling reading light
 - Saloon table - Varnished wooden top
 - Storage under bench seats
 - Bottle rack behind the bench against the forward bulkhead
 - 2 Panoramic coachroof windows with curtains
 - 2 Hull portholes
 - 1 Opening portlight with curtains in the coachroof side window
 - 2 Opening deck hatches with mosquito screen/blinds

CHART TABLE - PORT

- Headroom: 1,97m / 6'6"
- Table with storage- moulded wood fiddle - Laminated covering
 - Seat with backrest, lounger function
 - Electrical panel for access to electrical connections
 - 1 Flexible and swivelling reading light
 - 2 USB sockets
 - Bookshelf against forward bulkhead
 - 1 Hull porthole

GALLEY - PORT

- Headroom: 1,94m / 6'4"
- U-shaped galley
 - Work top in Clay compact with Corian fiddles
 - 1 rectangular stainless steel sink - 1 Mixer tap with hot/cold water under pressure
 - 1 Gas cooker 2 burners - Stainless steel oven on gimbal - Stainless steel protection handrail
 - 1 85 litre ice box, top opening (without refrigeration unit)
 - 1 130 litre refrigerator (12V), front opening
 - Fitted lockers and closed shelving
 - Bin with access on the work top
 - 1 Lower unit: 3 Drawers
 - 1 Opening portlight with curtains in the coachroof side window
 - 1 Hull porthole

PANTRY - PORT

- Headroom: 1,98m / 6'6"
- Access via galley
 - Large storage area (1 Hanging locker, Cupboards)
 - Place for washing machine (optional) instead of high unit
 - Place for wine cellar or negative cold conservator, 1 drawer (optional) instead of the low cupboard
 - 1 Opening portlight with curtains in the coachroof side window

OWNER'S CABIN

- Headroom: 1,95m / 6'5"
- Central double bed Island bed type, mounted on gas struts (2,05m x 1,60m x 1,23m / 6'9" x 5'3" x 4')
 - 2 Hanger closets, Open storage compartment along the hull, 6 Upper lockers, 1 Storage space under bed (Drawer under the bed + Central storage under bed)
 - 1 Seat on both sides of the bed
 - 2 Bedside tables
 - 2 Reading lights
 - 2 USB sockets
 - 1 Low shoe storage unit, 1 Mirror on bulkhead
 - Stowage provided under the floor (Stowage for bottles + 2 2 plastic baskets)
 - Piston-assisted hinges opening mechanism
 - 2 Flush deck hatches with mosquito screen/blind
 - 2 Hull portholes with sliding blind

2 PRIVATE HEADS:

Headroom: 1,85m / 6'1"

to port:

- Manual toilet
- 1 80 L / 21 US Gal rigid holding tank
- White polyester basin built into the Corian Clay work top, Mixer tap
- 1 Cabinet - Mirror
- Toilet accessories
- 1 Deck hatch with mosquito screen/blind

To starboard:

- Shower with wooden seat, white polyester shower base
- 2 storage closets
- 1 Deck hatch with mosquito screen/blind

PORT AFT CABIN

- Headroom: 1,97m / 6'6"
- 1 Double bed (2,10m x 1,60m / 6'11" x 5'3")
 - 2 Hanger closets - 1 Cupboard - Closed shelving
 - 1 Bed access sideboard
 - 2 flexible and multi-directional reading lights at bedhead
 - 1 USB socket
 - 1 Hull porthole with sliding blind
 - 1 Cockpit opening window with curtain under cockpit seats
 - 1 Fixed cockpit window with curtain on the coaming

STARBOARD AFT CABIN

- Headroom: 1,97m / 6'6"
- 1 Double bed (2,10m x 1,60m / 6'11" x 5'3")
 - 1 Hanging locker - 1 Cupboard - Closed shelving
 - 1 Bed access sideboard
 - 2 flexible and multi-directional reading lights at bedhead
 - 1 USB socket
 - Access door to aft head
 - 1 Hull porthole with sliding blind
 - 1 Cockpit opening window with curtain under cockpit seats
 - 1 Fixed cockpit window with curtain on the coaming

AFT HEAD - STARBOARD

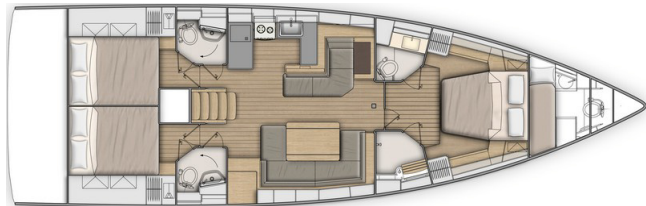
- Headroom: 1,83m / 6'
- Access from the saloon or the starboard aft cabin
 - Separate shower - 1 Mixer tap - White polyester shower base
 - Corian Clay work top with self-draining storage
 - 1 Manual toilet
 - 1 80 L / 21 US Gal rigid holding tank
 - Washbasin - 1 Mixer tap
 - 1 Cabinet + Storage space under the basin
 - 2 Mirrors
 - Toilet accessories
 - 1 Opening portlight with curtains in the coachroof side window

PANTRY - STARBOARD

- at base of companionway
- standard : 1 Hanging locker, Cupboard
 - Place for washing machine (optional) instead of high unit
 - Place for wine cellar or negative cold conservator, 1 drawer (optional) instead of the low cupboard



3 cabins 3 heads version

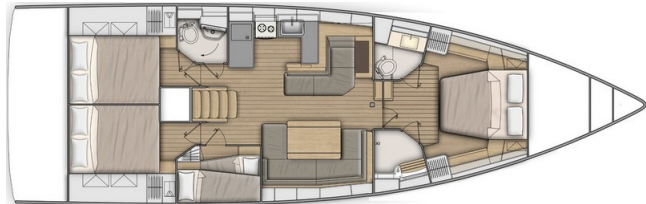


The pantry goes to the starboard side and is replaced by a head. The aft cabins are symmetrical.

The port and starboard aft heads are symmetrical:

- Access from the saloon or the aft cabin
- 1 Shower area accessible by swivelling the washbasin
- 1 Manual toilet
- 1 80 L / 21 US Gal rigid holding tank
- 2 Mirrors
- Toilet accessories
- 1 Opening portlight with curtains in the coachroof side window

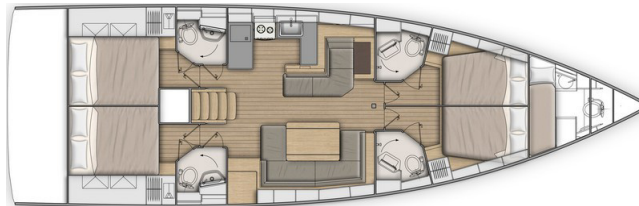
4 cabins 2 heads version



The starboard head of the standard version is replaced by a cabin with bunk beds.

- Headroom: 1,83m / 6'
- 2 Bunk beds:
 - Top bunk (1,95m x 0,79m - 0,54m / 6'5" x 2'7" - 1'9")
 - Bottom bunk (1,93m x 0,60m - 0,43m / 6'4" x 2' - 1'5")
- Storage
- 1 Opening porthole with curtain

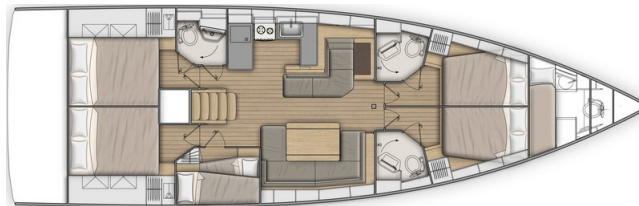
4 cabins 4 heads version



The saloon is unchanged. The cabins and heads are identical to version 3 cabins, 3 heads.

Forward: 2 cabins each with their private head.

5 cabins 3 heads version



The starboard head of the standard version is replaced by a cabin with bunk beds:

- Headroom: 1,83m / 6'
- 2 Bunk beds:
 - Top bunk (1,95m x 0,79m - 0,54m / 6'5" x 2'7" - 1'9")
 - Bottom bunk (1,93m x 0,60m - 0,43m / 6'4" x 2' - 1'5")
- Storage
- 1 Opening porthole with curtain

2 SYMMETRICAL FORWARD CABINS

Headroom: 1,93m / 6'4"

- 1 Double bed (2m x 1,36m x 1,16m / 6'7" x 4'6" x 3'10")
- 1 Hanging locker - 2 Closed high shelves, 1 Open shelving
- 1 Drawer under the bed
- 2 Swivelling reading lights
- 1 Deck hatch with mosquito screen/blind
- 1 Hull porthole with sliding blind
- 1 USB socket
- Access door to the head



ENGINE

- Engine Yanmar Diesel:
 - 80 HP, Sail Drive, Common Rail (standard)
 - 110 HP, Propeller shaft, Common Rail (Option)
- Engine throttle and control panel on starboard
- Engine compartment: Soundproofing foam - Ventilation: 3 air intakes and 1 forced air outlets
- 1 Alternator 12 V / 125Ah
- 1 Rotomoulded diesel tank 200 L / 53 US Gal (under starboard aft berth) - Electronic gauge - Low level alarm - 1 Deck filler
- Filters: Seawater - Diesel - Water separator
- Fixed three blades propeller
- 1 Engine access through companionway (opening with 2 gas struts) - 2 Engine access through aft cabins

ELECTRICITY

- 12V circuit
- 2 service batteries (140Ah) - 1 Engine battery (120Ah)
- 1 Battery charger (in trim level) + 1 Pre-fitting for charger
- 1 Power distributor
- 12 V Electrical panel (Fuses - Voltmeter - Water gauge - Fuel gauge - Battery warning - Fuel warning - Water warning)
- 6 230V Sockets
- 6 USB sockets
- 1 Shore power socket (230V)
- LED lighting: Overhead lights - Reading lights - Reading light, flexible and multi-directional
- LED navigation lights: 1 Masthead light - 1 Steaming light - 1 Anchor light on masthead
- Wire runs for option cables

PLUMBING

- 1 Rotomoulded freshwater tank 400 L / 106 US Gal, under berth in forward cabin - 1 Deck filler
- Pressurised electric water pump - Expansion tank - Inline filter
- 40 L / 11 US Gal Electric water heater (engine use)
- 1 Rigid 80 L / 21 US Gal black water holding tank for each WC
- Electrical shower drain pumps
- 1 Electric bilge pump
- 1 Manual bilge pump
- 1 Electric pump for the ice box drain

GAS

- 1 Box for 2 gas bottles in the cockpit (Diameter: 0,28m/ 11" x Height: 0,44m/ 1'5")
- Regulator and safety tap
- Gas leak detector

SMART BOARD

"SEANAPPS" smart technology:

- For monitoring the boat's status and receiving alerts as well as maintenance advice via the associated mobile application.
- The type of information collected (GPS position, batteries, engine info, navigation data, etc.) varies according to the boat's configuration.

seanapps

CONNECT YOUR BOAT **FREE YOUR MIND**

MISCELLANEOUS ITEMS

- Smoke detector
- Cleaning kit: eco-friendly cleaning products kit



TRIM LEVEL & PACKS

TRIM LEVEL

	CONFORT	FAMILY
<ul style="list-style-type: none"> • Beige padding upholstery in cabins • Battery charge display (Navicolor screen) • Galley: Stainless steel cooker 2 burner oven/grill on gimbal 	<ul style="list-style-type: none"> • • • 	
<ul style="list-style-type: none"> • Cockpit bench extensions + 2 halyard bags below • HiFi: Fusion + Interior loudspeakers & Waterproof exterior speakers • Galley: Refrigeration system, 12 V, in top-opening icebox (for storage below 0°C) • Galley: Compact sink cover Clay with cutting board • Mosquito screens on portholes • 3 Additional 140 ampères service batteries • 1 60 Amperes battery charger • AGM Batteries in lieu of standard • Saloon & Galley: LED indirect lighting 	<ul style="list-style-type: none"> • • • • • • • • • • 	<ul style="list-style-type: none"> • • • • • • • • • •
<ul style="list-style-type: none"> • Bow stainless steel protection • Aft transom protection • "Luxe" polyester cockpit table, 2 polyester extension leaves, Stainless steel handrails, waterproof USB socket, Central storage (15L / 4 US Gal), without refrigeration unit, life raft stowage - supplied without cover • Outboard engine bracket • Double berth in the saloon • Galley: Sea water/fresh water foot pump • Fans in the saloon and the cabins • Additional water tanks (2 x 165L / 2 x 44 US Gal) in the saloon 		<ul style="list-style-type: none"> • • • • • • • • • •

ELECTRONICS PACKS: RAYMARINE

	COASTAL	OFFSHORE	OFFSHORE PACK - LARGE CONSOLES (requires the bow thruster)
<ul style="list-style-type: none"> • 1 Steering console to starboard • 1 7" Axiom + multi-function touchscreen (GPS, Chart plotter, Chart reader - Navionics® + Blank cartography included), on the starboard console • Port side helm station: 1 i70s display, on deck • Windex Windvane • Wind Sensor (Windvane, Anemometer) • Sensor (Log, Speedometer, Temperature) • P70s autopilot + Starboard helm console control • Chart table: RAY73 VHF, AIS receiver function • Protective cover (Cadet Grey): Steering wheel & console 	<ul style="list-style-type: none"> • • • • • • • • • 	<ul style="list-style-type: none"> • • • • • • • • • 	<ul style="list-style-type: none"> • • • • • • • • •
<ul style="list-style-type: none"> • 1 Steering console to port • 1 7" Axiom + multi-function touchscreen (GPS, Chart plotter, Chart reader - Navionics® + Blank cartography included), on the port console • 1 i70s display, on the starboard console • S100 Wireless autopilot remote control 		<ul style="list-style-type: none"> • • • • 	<ul style="list-style-type: none"> • • • •
<ul style="list-style-type: none"> • XXL consoles to port and starboard • 1 9" Axiom + multi-function touchscreen, on each console • Electric engine controls, on the starboard console • Windlass control with chain counter, on the starboard console • Bow thruster control, on the starboard console 			<ul style="list-style-type: none"> • • • • •



PERFORMANCE PACK

(Incompatible with mainsail arch option)

*Boast supplied without sail (optional extra: **Black Technora Sails**)*

FIRST LINE ALU PACK

- Performance Classical aluminum mast, tapered, (Z Diffusion), 3 Aft swept spreaders (+ 1,50m / 4'11"). Track + Main sail ball traveller
- Dyform Standing rigging
- Textile hydraulic backstay
- Flatdeck genoa furler
- Performance running rigging, Dyneema (Mainsail, Genoa, Code 0, Asymmetric spinnaker, Halyards)
- German system (Two-way mainsheet at the helm station)
- Black Magic Harken blocks (in lieu of standard)
- Genoa sheet tracks on side decks
- Harken Performa winches upgrade (2 Electric H50.2 STPEH rigging winches - 2 Manual H60.2 STP genoa sheet winches) to replace the winches included in the standard
- White composite steering wheels
- Polyester bowsprit with integrated anchoring gear and bobstay (for Code 0 and asymmetric spinnaker)
- First Line hull decoration (red)

FIRST LINE CARBON PACK

- Performance classical carbon mast, tapered (Axxon), 3 Black anodised aluminum aft swept spreaders (+ 1,50m / 4'11"). Track + Main sail ball traveller
- Black anodised aluminum boom
- Dyform Standing rigging
- Textile hydraulic backstay
- Flatdeck genoa furler
- Performance running rigging (Dyneema)
- German system (Two-way mainsheet at the helm station)
- Black Magic Harken blocks (in lieu of standard)
- Genoa sheet tracks on side decks
- Harken Performa winches upgrade (2 Electric H50.2 STPEH rigging winches - 2 Manual H60.2 STP genoa sheet winches) to replace the winches included in the standard
- Black composite steering wheels
- Polyester bowsprit with integrated anchoring gear and bobstay (for Code 0 and asymmetric spinnaker)
- First Line hull decoration (red)

RIGGING PACKS (Incompatible with First Line Pack)

	DOWNWIND PACK	UPWIND PACK	DOWNWIND + UPWIND PACK
• 2 Genoa winches (H 60.2 STA) + 1 Winch handle	■	■	■
• Polyester bowsprit with integrated anchoring gear and bobstay (for Code 0 and asymmetric spinnaker)	■		■
• Asymmetrical spinnaker rigging / Code 0	■		■
• German system (Two-way mainsheet at the helm station) + 3 Additional starboard blockers	■	■	■
• Genoa sheet track in catwalks (pulls back the traveller on the self-trimming jib rail) + Complete genoa rigging (Genoa sheets, Return pulleys)		■	■
• Furling Dacron genoa (to replace the standard self-tacking jib)		■	■

CLASSICAL MAST PACK

- Classical ⁹/₁₀ anodised aluminum mast, 2 Spreaders
- Mainsail semi full batten (the standard self-tacking jib track remains)
- 3 Additional halyard clutches
- Lazy Jack and Lazy Bag in Natural colour

TENDER PACK

- Retractable davits (Max. tender length: 3,10m / 10'2", Maximum load: 180kg / 397 lbs)
- Electric inflater / deflater
- Outboard engine bracket

**OPTIONS****NAVIGATION ELECTRONICS: RAYMARINE**

- Chart table: 9" Axiom + multi-function touchscreen
- 700 AIS
- Quantum Doppler radar
- Offshore pack upgrade : 2 9" Axiom + (in lieu of 7")

RIGGING - SAILS

- Natural grey galvanised canoe boom with cover (for First Line Alu pack)
- Graphite black lacquered canoe boom with cover (for First Line Carbon pack)
- Xrp mainsail (for 2 aluminum classical mast with spreaders)
- Performance mainsail and genoa (for First Line pack): Xrp membrane, Natural colour UV protection band, Lazy bag & Lazy Jack Natural, Full batten mainsail (Requires the pack First Line)
- Xrp furling genoa 105%, tri-radial cut, Natural colour UV protection band Not available with Pack First Line (replacing the Dacron self-tacking jib, Compatible with in-mast furling and classical mast with 2 spreaders, implies rigging pack)
- Xrp self-tacking furling jib, tri-radial cut, Natural colour UV protection band (replacing the Dacron self-tacking jib) Compatible with in-mast furling and classical mast with 2 spreaders
- Code 0 with "Top Down" furling system (Not available with Pack First Line)
- Hydraulic backstay (for classical mast 2 spreaders)
- 1 GRP mainsail arch with 2 Stand-up mainsheet blocks (Incompatible with First Line Pack)
- Staysail rigging (Halyard sheave with block + Releasable forestay chainplate + 1 Self-tacking staysail sheet)

WINCHES

- 1 Port electric primary winch - H46.2 STAEH (in lieu of standard)
- 1 Starboard electric primary winch - H46.2 STAEH (Incompatible with First Line Pack)
- 2 Electric genoa winches - H60.2 STAEH (implies pack Downwind or Upwind pack - Incompatible with First Line Pack)
- 2 Electric Harken Performa genoa sheet winches - H60.2 STP (Requires the pack First Line)

HULL - DECK - COCKPIT

- Pearl grey gel-coat (with matching sticker on the halyard covers)
- Iro-Deck slatted cockpit floor
- Iro-Deck slatted side decks
- Iro-Deck slatted on companionway sunbeds
- "Luxe" polyester/wood cockpit table, 2 natural solid wood extension leaves, with built-in 15L / 4 US Gal cool box, waterproof USB socket, Stainless steel handrails, life raft stowage + White PVC protective cover
- Gas cockpit plancha
- Cockpit cushions Dolce 51 with seatbacks
- 2 Companionway sunbeds with tilting backrests and built-in cup holder, Dolce 51
- Bow thruster
- 4 folding blades propeller
- White or black composite steering wheels (Incompatible with First Line Pack)
- Access openings to port and starboard
- Outboard engine bracket (Not available with Pack Tender)
- Tilting transom remote control
- Underwater lights (x 4)
- Shore fresh water supply
- Fresh/sea water pump for deck cleaning
- 1 Additional opening porthole, in the aft cabins (in coaming)
- Large swimming ladder attached to the aft platform (in lieu of standard)
- Roof solar panels (530 W)

MOORING LINES - MOORING

- Mooring kit:
 - Delta 25 kg/55 lbs anchor (galvanized steel)
 - Chain (Diameter: 12mm / $\frac{1}{2}$ " - Length: 40m / 131')
 - Line (Diameter: 22mm / $\frac{7}{8}$ " - Length: 50m / 164')
 - 6 Fenders:
 - 2 L (Diameter: 250mm / 10" - Length: 700mm / 2'4")
 - 4 XL (Diameter: 300mm / 12" - Length: 880mm / 2'11")
 - 4 Moorings lines (Diameter: 18mm / $\frac{11}{16}$ " - Length: 15m / 49')
- Aft fairleads (Aluminium mooring cleats on transom)
- Windlass control in cockpit with chain counter

OUTSIDE PROTECTIONS

- "Luxe" coachroof sprayhood, Windows in Strataglass, Cadet Grey (2 Versions: with and without mainsail arch)
- Rigid Bimini cockpit top with LED lighting, Cadet Grey central sliding canvas panel for manual opening
- "Luxe" bimini, with shading canvas and LED lighting, Windows in Strataglass, Cadet Grey (2 Versions: with and without mainsail arch) - "Luxe" sprayhood option required
- Cadet Grey bimini top full closing (Bimini option required)
- Sunshade (Roof), Cadet Grey
- Cover for standard cockpit table, Cadet Grey

**INTERIOR EQUIPMENT****LAYOUT VERSIONS**

- 3 cabins 3 heads version
- 4 cabins 2 heads version
- 4 cabins 4 heads version
- 5 cabins 3 heads version
- Forepeak cabin (In place of the sail locker):
 - Access through T70 deck hatch, Passage width: 62 cm/2' - Stainless steel ladder
 - Headroom: 1,80m / 5'11", beneath deck hatch
 - 1 Bed (2m x 0,66m / 6'7" x 2'2") Foam mattress - PVC cover
 - 2 Storage lockers, Under the bed - Cupboard and shelves
 - Manual toilet + Rigid holding tank (50L / 13 US Gal) - Washbasin - Mirror - Shower head mixer tap - Shower tray with curtain
 - 1 LED ceiling light, 1 LED reading light

AMBIANCE

- Alpi white oak joinery (3 gloss)
- Brown oak laminated floors (only with Alpi white oak woodwork)
- Interior upholstery, according to swatches
- Upholstery padding (Saloon and Cabins): Macadamia
- Mirrors on the forward bulkhead

MULTIMEDIA

- TV pre-assembly on lifting system in the saloon
- TV pre-assembly in master cabin
- Upgrade: BOSE speakers in saloon

DOMESTIC APPLIANCES

- Temperate wine cellar for 23 bottles, Glass door
- Pre-fitting for dishwasher for 6 sets
- Pre-fitting for washer dryer (8-5kg / 18-11 lbs / 230V)
- 1 stainless steel refrigerating drawer (75L) - for storage below 0°C (230V - Inverter recommended)
- Pre-fitting for microwave oven 20 L
- Stainless steel cooker 3 burner oven/grill on gimbal (required Confort or Family trim level)

ON BOARD COMFORT EQUIPMENT

- Berth in saloon
- Extended saloon table (compatible with sleeping option in the saloon)
- Electronic safe
- Spring mattress in the cabins
- Wrinkled blinds in the saloon (2 on the fixed deck panels, 4 for the hull portholes)
- Lithium batteries (3 150Ah lithium batteries to replace the 5 AGM service batteries, required Confort or Family trim level)
The lithium batteries can be used in exactly the same way as the greater number of AGM batteries that they replace. This technology allows 100% of the battery capacity to be used compared with 75% for the AGM batteries. The engine battery is still AGM.
- Additional water tanks (2 x 165L / 2 x 44 US Gal), in the saloon
- Extra diesel tanks (200L / 53 US Gal), under starboard aft berth
- 9 kVA Generator (230V / 50Hz)
- Watermaker (60 l/h / 16 US Gal/h)
- 40 000 BTU air conditioning full boat (only for use via shore power supply) + Shore socket extension cord 15m / 49'3"
- Forced air heating fuel
- 12/230 V, 2 kVA inverter
- Quiet flush electric toilets - Fresh water/Seawater
- Lee cloth in each aft cabin
- Sea water/fresh water foot pump (Galley)
- Fans in the saloon and cabins (not compatible with Family trim level)
- Tableware - 6 people