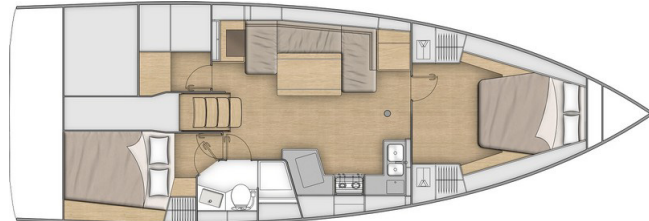
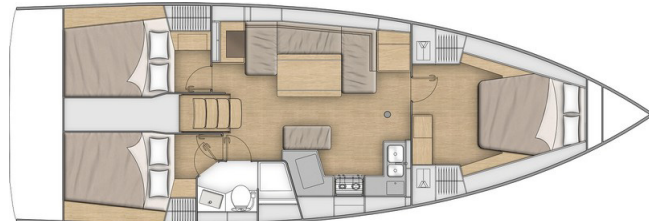




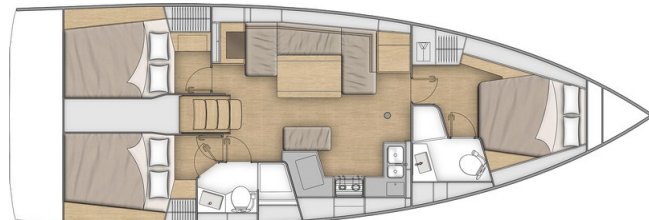
2 cabins 1 head version



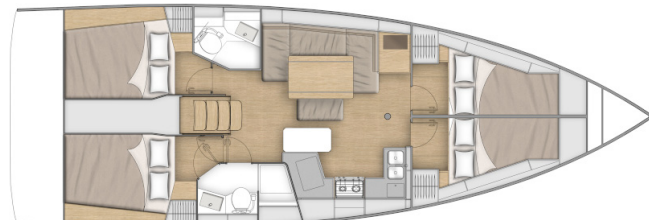
3 cabins 1 head version (+ Sink unit)



3 cabins 2 heads version



4 cabins 2 heads version



## GENERAL SPECIFICATIONS

• L.O.A	12,87m	42'3"
• Hull length	11,99m	39'4"
• L.W.L.	11,70m	38'5"
• Beam	4,18m	13'9"
• Deep draft (Cast iron)	2,17m	7'1"
• Deep ballast weight	2 007kg	4,423 lbs
• Shallow draft (Cast iron)	1,68m	5'6"
• Shallow ballast weight	2 237kg	4,930 lbs
• Performance draught (Cast iron)	2,27m	7'5"
• Performance keel weight	2 004kg	4,417 lbs
• Air draft (with aerial)	18,33m	60'2"
• Performance air draught (with aerial)	18,78m	61'7"
• Light displacement	7 985kg	17,600 lbs
• Fuel capacity (standard)	195L	52 US Gal
• Fresh water capacity (standard)	235L	62 US Gal
• Fresh water capacity (option)	330L	87 US Gal
• Engine power (standard)	45 HP	45 HP

## ARCHITECTS / DESIGNERS

- Naval Architect: Marc Lombard
- Outside & interior design: Nauta Design

## EC CERTIFICATION

	1 Head	2 Heads
• Category A	10 people	10 people
• Category B	10 people	10 people
• Category C	10 people	12 people

## STANDARD SAILS DIMENSIONS

• Furling mainsail (standard)	34,70m <sup>2</sup>	373 sq ft
• Self-tacking jib (standard)	26,90m <sup>2</sup>	290 sq ft
• Classic mainsail	41,80m <sup>2</sup>	450 sq ft
• Furling genoa (105 %)	34,40m <sup>2</sup>	370 sq ft
• Code 0	61,10m <sup>2</sup>	658 sq ft
• I	15,13m	49'8"
• J	4,77m	15'8"
• P - Roller furling mast	14,69m	48'2"
• P - Classical mast	14,83m	48'8"
• E	5,08m	16'8"

## PERFORMANCE (Extended classic mast + 0,45m / 1'6")

• Classic mainsail	43,20m <sup>2</sup>	465 sq ft
• Genoa	36,50m <sup>2</sup>	392 sq ft
• I	15,65m	51'4"
• J	4,78m	15'8"
• P	15,40m	50'6"
• E	5,00m	16'5"

**se@apps**

CONNECT YOUR BOAT FREE YOUR MIND



## STANDARD EQUIPMENT

### CONSTRUCTION

- Design in accordance with European Directive requirements and according to CE certification
- Monolithic polyester contact hull
- Monolithic structural inner moulding bonded to the hull (Fabrics - resin)
- Injected deck construction in glass fiber and Saerfoam foam sandwich, covered with non-slip diamond pattern
- Cast iron keel fixed with bolts and stainless steel backing plates
- Twin rudders hung with stainless steel stock
- White coloured hull - Grey metal hull graphics
- 6 Hull portholes

### DECK EQUIPMENT

#### RIGGING

- Anodized furling mast (Z-Diffusion), deck stepped with in-mast furling system, 2 Aft swept spreaders
- Anodised aluminum boom
- Classic stainless steel single strand standard rigging
- Split backstay
- Rigid boom vang with tackle
- Self-tacking jib rigging with on-deck furler
- Mainsail stay rope on the roof (with 2 chainplates)
- 1 Self-tacking jib track with traveller
- Complete running rigging: Mainsail halyard, Genoa halyard with cleat on mast, Boom topping lift with cleat on mast, Mainsheet, 1 Self-tacking jib sheet
- 9 Clutches
- 2 flag halyards

#### WINCHES

- 2 Self tailing coachroof winches (H40.2 STA) on the coachroof
- 1 Aluminum Speed Grip winch handle
- 1 Winch handle box

#### SAILS (Technique Voile)

- Furling mainsail Dacron, with UV protection Natural, horizontal cut
- Self-tacking jib Dacron with UV protection Natural, horizontal cut

### MOORING LINES - MOORING

- Self-draining chain locker - Integrated clench on the deck - Hatch cover
- Single roller stainless steel bow fitting with offset roller
- 6 Aluminum mooring cleats (Length: 300mm / 12")
- Stainless steel chafing plate

### SAFETY ON DECK

- 2 stainless steel pulpit(s)
- 2 Stainless steel pushpits
- 2 Stainless steel handrails on coachroof
- 1 Lifebuoy support bracket
- Tube welded onto pulpit for flag
- Double guard lines and stainless steel stanchions (605mm / 2')
- Emergency ladder on pushpit

### COCKPIT

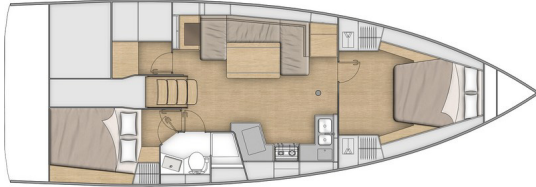
- Self-draining cockpit
- 1 Sail locker/Workshop below starboard cockpit bench
- 1 Wet locker below starboard cockpit bench
- 1 2-section cockpit bottom locker: 1 hull bottom access and 1 gas bottle
- Iro-Deck slatted cockpit benches
- Foldaway helmsman foot chock
- 2 Steering wheel consoles: Stainless steel steering wheels (900 mm / 2'11" diameter) - Anthracite leather covering - Steering gear at the helm station - Steering line transmission system - Stainless steel handrail
- 2 Deck access for emergency tiller, below footrest
- 1 Tiller
- 1 Steering compass on the cockpit table
- Engine control, to starboard
- Enginer control panel, to port
- Cockpit table, stainless steel frame, 2 natural solid wood extension leaves, 4 cup holders, stainless steel handrail, waterproof USB socket, life raft stowage
- 1 2-part PMMA Saloon-type companionway door, Sliding hatch made of PMMA

### SWIM PLATFORM / AFT TRANSOM

- Fully opening transom, convertible to bathing platform (2,65 x 0,80m / 8'8" x 2'7")
- Intermediate cockpit access step
- Manual opening with hoist
- Iro-Deck slatted swim deck
- 1 Fixed, telescopic stainless steel swimming ladder

**INTERIOR**

- Alpi walnut woodwork
- Rovere Alévé type laminated floorboards
- Fabric interior upholstery
- Padded lining in saloon (Beige)
- Mattress in cabins, HR35kg/m3 foam

**Standard version: 2 Cabins - 1 Head - 1 Workshop****COMPANIONWAY**

Headroom: 1,95m / 6'5"

- Wooden saloon companionway with hanging steps made from laminated moulded wood with non-slip coating
- 2 Stainless steel handrails covered with anthracite leather

**SALOON - PORT**

Headroom: 2,00m / 6'7"

- U shaped saloon bench - double density foam
- Saloon table, wooden top, 2 fixed aluminum legs
- Storage under bench seats
- 1 dual USB port (in trim level)
- 1 Hull porthole
- 2 Coaming windows with pleated blinds
- 2 Opening deck hatches with mosquito screen/blinds

**CHART TABLE - PORT**

Headroom: 1,97m / 6'6"

- Table with drop fronts - Wooden fiddle
- Switch panel on bulkhead for access to electrical functions
- Stowage against the bulkhead below the chart table
- 1 230 V socket (in trim level)
- 1 Single USB socket
- 1 spotlight
- 1 Opening porthole in coaming
- 1 Fixed coaming window with pleated blind

**GALLEY - STARBOARD**

Headroom: 1,91m / 6'3"

- C-shaped galley
- Work top in Compact Clay
- Stainless steel sink 2 rectangular basins - 1 Mixer tap with hot/cold water under pressure
- 1 Gas cooker 2 burners - Stainless steel oven on gimbal - Stainless steel protection handrail
- 190L / 50 US Gal icebox, top opening (with 10 L/3 US Gal freezer)
- Fitted lockers and closed shelving
- Open shelving above stove and sink
- Low-level stowage below sink
- Lower unit: 1 door, 2 drawers
- Bin with access on the work top
- 2 230V Sockets (in trim level)
- 2 Coaming windows with pleated blinds
- 1 Hull porthole
- 1 Flush deck hatch with blind/mosquito net

**OWNER'S CABIN (Forward cabin)**

Headroom: 1,94m / 6'4"

- 1 Central double bed (2,03 x 1,60 - 1,31m / 6'8" x 5'3" - 4'4")
- 2 Hanger closets, open storage compartment along the hull
- 1 bedside table on each side of the bed
- 2 Spotlights on the headboard
- 1 dual USB port (in trim level)
- 1 230 V socket (in trim level)
- 3 Flush deck panel with blind/mosquito net
- 2 Portholes with rigid sliding blind

**STARBOARD AFT CABIN**

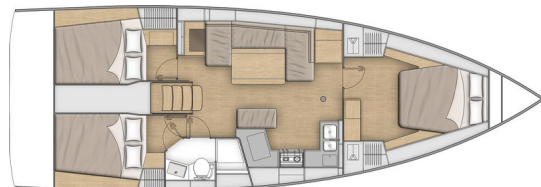
Headroom: 1,93m / 6'4"

- 1 Double bed (2,04 x 1,37 x 1,21m / 6'8" x 4'6" x 4')
- 1 Hanging locker
- 1 Bed access sideboard
- 1 Spotlight on the headboard
- 1 dual USB port (in trim level)
- 1 230 V socket (in trim level)
- 1 Hull porthole with curtain
- 1 Opening porthole below cockpit seat with curtain

**STARBOARD AFT HEAD COMPARTMENT**

Headroom: 1,95m / 6'5"

- Access from the saloon or the starboard aft cabin
- Shower with perspex door - self-draining storage tray - 1 mixer tap - White polyester shower base
- 1 Manual toilet
- 1 80 L / 21 US Gal rigid holding tank
- 1 Polyester basin - 1 Hot/cold water mixer tap
- 1 Cabinet + Storage space under the basin
- 2 Mirrors
- Toilet accessories
- 1 Opening porthole in coaming

**3 cabins 1 head version**

*In the saloon: movable central seating facing the table, no seat back. Built-in stowage locker.*

*The workshop of the standard version converts into the aft starboard cabin with large hanging locker.*

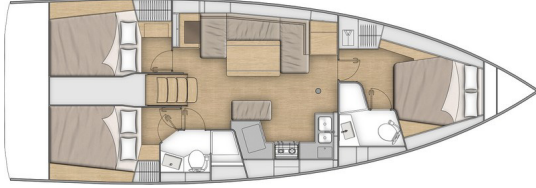
**Port aft cabin**

Headroom: 1,93m / 6'4"

- 1 Double bed (2,04 x 1,37 x 1,21m / 6'8" x 4'6" x 4')
- 1 Hanging locker
- 1 Bed access sideboard
- 1 Spotlight on the headboard
- 1 dual USB port (in trim level)
- 1 230 V socket (in trim level)
- 1 Hull porthole with curtain
- 1 Opening porthole below cockpit seat with curtain



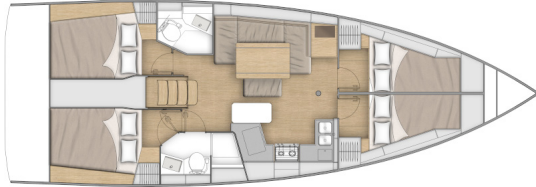
## 3 cabins 2 heads version



The forward cabin has a large head to starboard comprising:

- Private entrance through forward cabin
- Shower with perspex door - self-draining storage tray - 1 mixer tap
- 1 Manual toilet
- 1 50 L / 131 US Gal rigid holding tank
- 1 Polyester basin - 1 Hot/cold water mixer tap
- 1 Cabinet + Storage space under the basin
- 1 Mirror
- Toilet accessories
- 1 Deck hatch with blind/mosquito net

## 4 cabins 2 heads version



Headroom: 1,94m / 6'4"

- 2 Double cabins with hanging locker to forward
- 1 Aft port side head replacing the chart table

## ENGINE

- Yanmar engine (Diesel): 45 HP Common rail (4JH45) - Propeller shaft
- Engine control at the starboard helm station - Enginer control panel, to port
- Engine compartment: Soundproofing foam - Ventilation: 3 air intakes and 1 forced air outlets
- 1 Alternator 12 V / 125Ah
- 1 Rotomoulded diesel tank 195 L / 52 US Gal (under port aft berth)
  - Electronic gauge - Low level alarm - 1 Deck filler
- Filters: Seawater - Diesel - Water separator
- Fixed three blades propeller
- 1 Engine access through companionway (opening with 2 gas struts)
  - 2 Engine access through aft cabins

## ELECTRICITY

- 12V circuit
- 2 service batteries (115Ah) - 1 Engine battery (120Ah)
- 1 Power distributor
- 12 V electrical panel on the chart table with single USB socket (Fuses - Voltmeter - Water gauge - Fuel gauge - Battery warning - Fuel warning - Water warning)
- 1 Single USB socket
- Lighting: Overhead lights - Spotlights - LED strip
- Navigation lights (LED): 2 Navigation lights - 1 Anchor light on masthead - 1 Aft starboard stern light
- Wire runs for option cables

## PLUMBING

- 1 rotomoulded freshwater tank (195L / 52 US Gal) under starboard aft berth - 1 Deck filler
- Pressurised electric water pump - Expansion tank - Inline filter
- 40 L / 11 US Gal Electric water heater (engine use)
- 1 Rigid black water holding tank for each WC
- Electrical shower drain pumps
- 1 Electric bilge pump
- 1 Manual bilge pump

## GAS

- 1 2 container for gas bottles in the cockpit locker (0,39m x 0,39m / 1'3" x 1'3" - Height: 0,51m / 1'8")
- Regulator and safety tap

## SMART BOARD

"SEANAPPS" smart technology:

- For monitoring the boat's status and receiving alerts as well as maintenance advice via the associated mobile application.
- The type of information collected (GPS position, batteries, engine info, navigation data, etc.) varies according to the boat's configuration.

# seanapps

CONNECT YOUR BOAT FREE YOUR MIND

## MISCELLANEOUS ITEMS

- Smoke detector
- Cleaning kit: eco-friendly cleaning products kit



## TRIM LEVEL & PACKS

### TRIM LEVEL

	CONFORT	FAMILY
<ul style="list-style-type: none"> <li>• Beige padding upholstery in cabins</li> <li>• Iro-Deck slatted helm seats</li> <li>• 2 Halyard bag</li> <li>• Electric windlass (1 000 W) - Remote control</li> <li>• Hot/cold water cockpit shower</li> <li>• LED courtesy light in cockpit</li> <li>• Saloon: LED indirect lighting</li> <li>• Upgrade of hotplate/galley oven: oven with grill</li> <li>• Galley: Front opening for icebox</li> <li>• Galley: Compact sink cover Clay with cutting board</li> <li>• Hifi Fusion + Interior loudspeakers &amp; Waterproof exterior speakers</li> <li>• 1 dual USB port in the saloon and in each cabin</li> <li>• Full 230 V system (6 Inside sockets, 1 Shore power socket)</li> <li>• 60 Amperes battery charger</li> <li>• 2 Additional service batteries</li> <li>• AGM 100 Ah batteries with replacement of standard (engine and servo)</li> <li>• Battery charge display, Navicolor screen (3.5")</li> <li>• Mosquito nets for opening portholes</li> </ul>	<ul style="list-style-type: none"> <li>▪</li> <li>▪</li> <li>▪</li> <li>▪</li> <li>▪</li> <li>▪</li> <li>▪</li> <li>▪</li> <li>▪</li> <li>▪</li> <li>▪</li> <li>▪</li> <li>▪</li> <li>▪</li> <li>▪</li> <li>▪</li> <li>▪</li> <li>▪</li> </ul>	<ul style="list-style-type: none"> <li>▪</li> <li>▪</li> <li>▪</li> <li>▪</li> <li>▪</li> <li>▪</li> <li>▪</li> <li>▪</li> <li>▪</li> <li>▪</li> <li>▪</li> <li>▪</li> <li>▪</li> <li>▪</li> <li>▪</li> <li>▪</li> <li>▪</li> <li>▪</li> <li>▪</li> </ul>
<ul style="list-style-type: none"> <li>• Aft transom protection</li> <li>• Bow protection</li> <li>• Outboard engine bracket</li> <li>• Saloon: Double berth</li> <li>• Galley: Sea water/fresh water foot pump</li> <li>• Additional freshwater tank (330L / 87 US Gal)</li> <li>• Fans in the saloon and the cabins</li> </ul>		<ul style="list-style-type: none"> <li>▪</li> <li>▪</li> <li>▪</li> <li>▪</li> <li>▪</li> <li>▪</li> <li>▪</li> </ul>

### ELECTRONICS PACKS: RAYMARINE

	COASTAL	OFFSHORE
<ul style="list-style-type: none"> <li>• to port: 1 i70s display</li> <li>• Starboard helmstation: <ul style="list-style-type: none"> <li>- 1 Steering console</li> <li>- 1 7" Axiom + multi-function touchscreen (GPS, Chart plotter, Card reader - Navionics®+ Blank cartography included)</li> <li>- 1 Console cover, Cadet Grey</li> </ul> </li> <li>• Sensor (Log, Speedometer, Temperature)</li> <li>• Wind Sensor (Windvane, Anemometer)</li> <li>• Windex Windvane</li> <li>• P70s autopilot + Control</li> <li>• Chart table: RAY73 VHF, AIS receiver function</li> </ul>	<ul style="list-style-type: none"> <li>▪</li> <li>▪</li> <li>▪</li> <li>▪</li> <li>▪</li> <li>▪</li> <li>▪</li> <li>▪</li> <li>▪</li> <li>▪</li> </ul>	<ul style="list-style-type: none"> <li>▪</li> <li>▪</li> <li>▪</li> <li>▪</li> <li>▪</li> <li>▪</li> <li>▪</li> <li>▪</li> <li>▪</li> <li>▪</li> </ul>
<ul style="list-style-type: none"> <li>• Port side helm station: <ul style="list-style-type: none"> <li>1 7" Axiom + multi-function touchscreen (GPS, Chart plotter, Card reader - Navionics®+ Blank cartography included) - <i>in lieu of i70s display</i></li> </ul> </li> <li>• S100 Wireless autopilot remote control</li> </ul>		<ul style="list-style-type: none"> <li>▪</li> <li>▪</li> </ul>



## CLASSICAL MAST PACK

- Classical  $\frac{9}{10}$  anodised aluminum mast, 2 Spreaders
- Dacron semi Full Batten mainsail
- Lazy Jack and Lazy Bag in Natural colour

## RIGGING PACKS (Incompatible with First Line Pack)

	DOWNWIND PACK	UPWIND PACK	DOWNWIND + UPWIND PACK
<ul style="list-style-type: none"> <li>• Rigging run back to cockpit (except boom topping lift)</li> <li>• 2 Genoa winches (H46.2 STA)</li> <li>• Additional jammers (on the roof for the halyard or on the coaming for the Genoa sheet, depending on the pack)</li> <li>• Polyester bowsprit with integrated anchoring gear and bobstay (for Code 0 and asymmetric spinnaker)</li> <li>• Asymmetrical spinnaker rigging / Code 0</li> <li>• Genoa sheet tracks on side decks (pulls back the traveller on the self-trimming jib rail)</li> <li>• Furling Dacron genoa (to replace the standard self-tacking jib)</li> </ul>	<ul style="list-style-type: none"> <li>• 1 single on roof</li> </ul>	<ul style="list-style-type: none"> <li>• 2 doubles on coaming</li> </ul>	<ul style="list-style-type: none"> <li>• 2 doubles on coaming + 1 single on roof</li> </ul>

## PERFORMANCE PACK

*Boast supplied without sail (optional extra: Performance Sails)*

### FIRST LINE ALU PACK (incompatible with the rigging packs)

- Polyester bowsprit with integrated anchoring gear and bobstay (for Code 0 and asymmetric spinnaker)
- Performance Classical aluminum mast, tapered, (Z Diffusion), 2 Aft swept spreaders (+ 0,45m / 1'6")
- Cascading backstay
- Cathedral type Dyform standing rigging
- Flatdeck genoa furler
- Additional jammers: 1 triple jammer on coaming to port and starboard for mainsail sheet, genoa sheet, adjustment of genoa sheet traveller (hauling line) + 1 single jammer on roof for spinnaker halyard/code 0
- Performance running rigging, Dyneema (Mainsail, Genoa, Code 0, Asymmetric spinnaker, Halyards)
- German system (Two-way mainsheet at the helm station)
- Harken pulleys upgrade (in lieu of standard) - 12 E60 blocks + 4 E80 blocks
- Genoa sheet tracks on side decks + Genoa sheets
- 2 Genoa sheet manual winches (H46.2 STA)
- Black composite steering wheels
- Performance hull decoration

**OPTIONS****NAVIGATION ELECTRONICS: RAYMARINE**

- 700 AIS
- Quantum Doppler radar

**RIGGING - SAILS**

- Performance mainsail & Genoa (First Line Pack) / Sail technology: DCX, Natural colour UV protection band, Lazy Jack and Lazy Bag in Natural colour, Full batten mainsail
- Code 0 on furler for mast with in-mast furling or standard mast (Incompatible with First Line Pack)
- Cascading backstay (for traditional mast, standard air draught)
- Self-tacking staysail rigging (Halyard sheave with block + Releasable forestay chainplate + Self-tacking staysail sheet)
- Rigging of self-tacking jib (traveller) used to retain the use of a self-tacking jib with the Upwind and Upwind/Downwind packs

**WINCHES**

- 1 Port electric primary winch (H40.2 STAEH) in lieu of standard
- 2 Electric genoa winches (H46.2 STAEH) + 1 Winch handle (implies rigging pack)

**HULL - DECK - COCKPIT**

- Pearl grey hull
- Iro-Deck slatted cockpit floor
- "Luxe" polyester/wood cockpit table, 2 natural solid wood extension leaves, Stainless steel handrails, Central storage (15L / 4 US Gal), without refrigeration unit, waterproof USB socket, life raft stowage + Protective cover (Cadet Grey)
- "Luxe" polyester cockpit table, 2 polyester extension leaves, Stainless steel handrails, waterproof USB socket, Central storage (15L / 4 US Gal), without refrigeration unit, life raft stowage - supplied without cover
- Refrigeration unit for "Luxe" cockpit table
- Cover for standard cockpit table (Cadet Grey)
- Steering wheels covers (Cadet Grey)
- "Luxe" (Cadet Grey) sprayhood with LED lighting, Superclear windows
- "Luxe" (Cadet Grey) bimini ("Luxe" sprayhood option required)
- Cadet Grey bimini top full closing (Bimini option required)
- Cockpit seats Dolce 51
- Electrically opening bathing platform, Control at steering station + 2 Remote controls
- Retractable bow thruster (Side Power) + Dedicated batteries (50Ah - 12V)
- Aft fairleads (Aluminium mooring cleats on transom)
- 3 folding blades propeller
- Black composite steering wheels
- Mooring kit:
  - Delta 20 kg/44 lbs anchor (galvanized steel)
  - Chain (Diameter: 10mm /  $\frac{3}{8}$ " - Length: 32m / 105')
  - Line (Diameter: 18mm /  $\frac{11}{16}$ " - Length: 45m / 147')
  - 6 Fenders:
    - 2 L (Diameter: 250mm / 10" - Length: 700mm / 2'4")
    - 4 XL (Diameter: 300mm / 12" - Length: 880mm / 2'11")
  - 4 Moorings lines (Diameter: 18mm /  $\frac{11}{16}$ " - Length: 15m / 49')
- Windlass control in cockpit with chain counter
- Access openings to port and starboard
- Outboard engine bracket (not compatible with Family trim level)
- Shore fresh water supply
- 1 Opening porthole with curtain in the aft cabins (on roof on each side of the companionway)
- Stainless steel pivoting davits
- Roof solar panels (490 W)



## INTERIOR EQUIPMENT

---

### LAYOUT VERSIONS

- 2 cabins 1 head version
- 3 cabins 1 head version
- 3 cabins 2 heads version
- 4 cabins 2 heads version

### AMBIANCE

- Interior woodwork: Alpi white oak
- Brown oak laminated floors (only with Alpi white oak woodwork)
- Interior upholstery according to colour chart
- Macadamia padding upholstery in the saloon and the cabins (requires Confort trim level)
- Beige or Macadamia padding upholstery in cabins & Headboard of forward cabin (for Family finishing)

### MULTIMEDIA

- TV pre-assembly in the saloon

### DOMESTIC APPLIANCES

- Pre-fitting for microwave oven 20 L

### ON BOARD COMFORT EQUIPMENT

- Double berth in saloon
- Sink unit in the forward cabin and mirror on bulkhead (for versions with 1 head, 2 and 3 cabins)
- Central bench seat in the saloon (for the 2 cabin version, 1 head)
- Pleated blinds for hull portholes in the saloon
- Sea water/fresh water foot pump in galley
- Extra water tank (330L / 87 US Gal) under berth in forward cabin
- 6,4 kVA Generator (230V / 50Hz)
- 24 000 BTU air conditioning full boat (only for use via shore power supply) (compatible with heating option)
- Forced air heating fuel (compatible with the air conditioning option)
- Pre-fitting for autonomous air conditioning 8 000 BTU on Lithium battery in saloon operating duration: 3 hours on battery, useful when at anchor + recharging and use of motor or shore power - (12V - 230V) (Not compatible with heating, inverter, lithium battery options, - required Confort or Family trim level)
- Included:
  - 1 Dedicated 12 V/230 V - 2 000 W inverter (this inverter does not allow the onboard comfort options)
  - 2 Lithium batteries (150Ah)
  - 1 60 Ah service battery charger (replacing the 40 Ah charger for the trim level)
- 12V / 230V inverter - 2 000 W
- Quiet Flush seawater electric toilet
- Shore fresh water supply
- 2 150Ah lithium batteries to replace the 4 AGM service batteries (required Confort or Family trim level)  
*The lithium batteries can be used in exactly the same way as the greater number of AGM batteries that they replace. This technology allows 100% of the battery capacity to be used compared with 75% for the AGM batteries. The engine battery is still AGM.*
- Fans in the saloon and cabins (not compatible with Family trim level)
- Tableware - 6 people